

GrowthPoint

Southern Rhode Island Growth Reinforcement Project

Presentation to the East Greenwich Town Council

March 11, 2019

nationalgrid



Project Overview

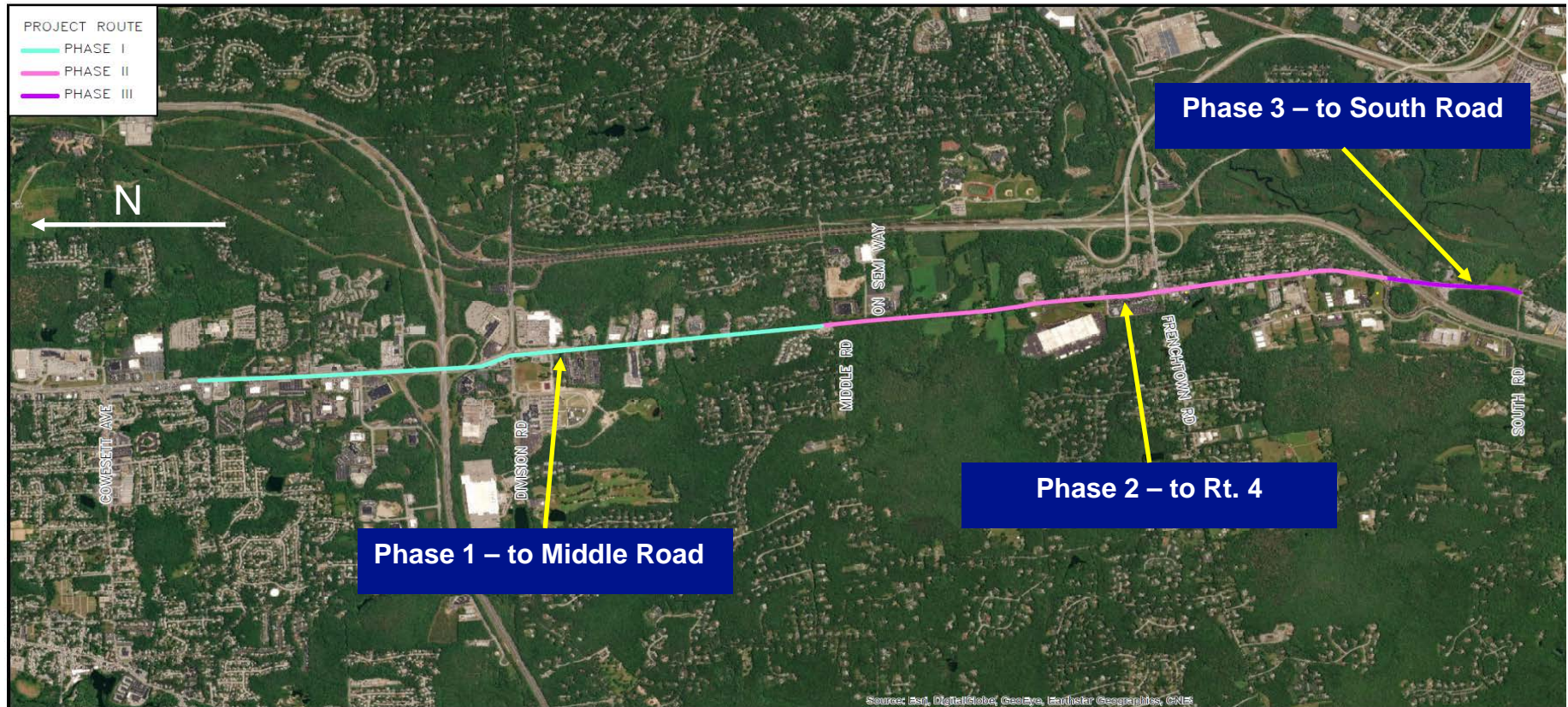
- Construct approximately 5.1 miles of natural gas distribution main along Route 2 in Warwick (620 feet), West Warwick (5,780 feet), and East Greenwich (20,200 feet)
- 20" steel distribution main will be installed in parallel to existing 12" distribution main in Route 2, Rhode Island Department of Transportation Right-of-Way (RIDOT ROW)
- Will be constructed to be in-line inspected (ILI) and designed for maximum allowable operating pressure (MAOP) of 200 psig, but initially operated at 99 psig
- Cost: Approximately \$81.3M

Project Need

- Project allows National Grid to:
 - ❖ Continue to maintain minimum required pressures to local customers to meet forecasted growth
 - ❖ Improve gas system delivery
- Forecasted local customer growth expected to exceed capacity of Southern Rhode Island Distribution System which could result in pressures to local customers falling below minimum in Southern Rhode Island service territory
- Current growth forecasts predict approximately 3,750 local customers could lose service on peak days by Winter 2022/2023
- Without Project, National Grid will need to implement restrictions or a moratorium on new gas services and requests to expand existing services to ensure reliable service to existing customers

Project Location and Schedule

Construction – Phase 1 (12,600')	April – December 2019
Construction – Phase 2 (11,000')	April – December 2020
Construction – Phase 3 (3,000')	April – December 2021



Project Construction

- Project construction will occur in three phases
- Over 90% of Project will be open-cut along western shoulder of Rt. 2
- Six jack-and-bore locations
 - ❖ Two in Phase 1
 - ❖ Four in Phase 2
- Two horizontal directional drill (HDD) locations at bridge crossings
 - ❖ Near Meadowbrook Road in East Greenwich – approximately 700' drill (Phase 2)
 - ❖ Route 2/Route 4 Crossing in East Greenwich – approximately 1300' drill (Phase 3)

Open-Cut



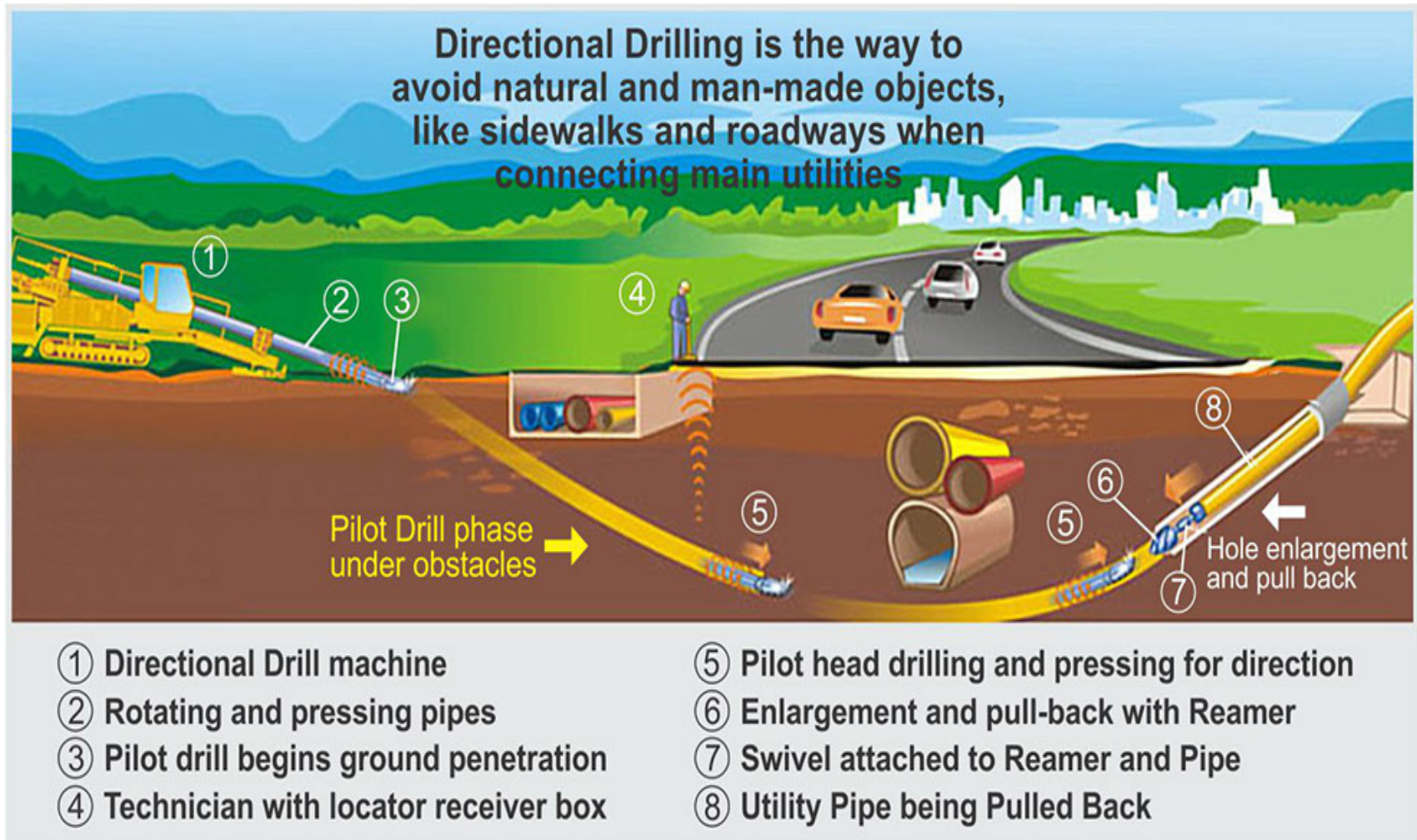
Source: JMB Construction, Inc.

Jack-and-Bore



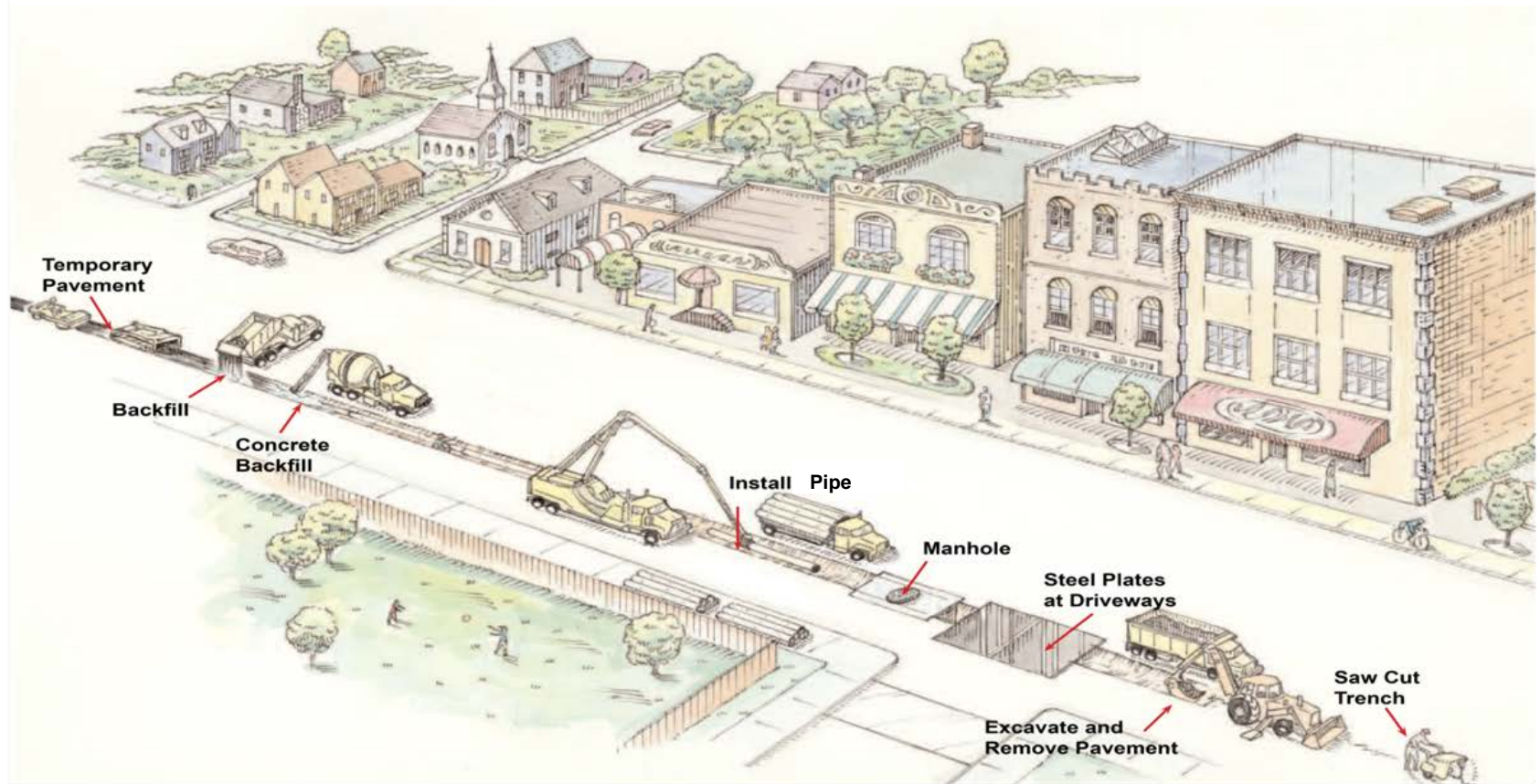
Source: Spring & Associates, Inc.

Horizontal Directional Drill



Source: Northwest Utilities Illinois

General Gas Main Installation Process



Stakeholder Outreach

Stakeholder Outreach Efforts	
June 2018	
25 June 18	Met with Commerce RI
26 June 18	Met with RIDOT
28 June 18	Met with Town of West Warwick
July 2018	
10 July 18	Met with City of Warwick
12 July 18	Met with Town of East Greenwich
19 July 18	Met with Quonset Development Corporation
August 2018	
7 Aug 2018	Met with Central RI Chamber
27 Aug 18	Met with East Greenwich Chamber
28 Aug 18	Met with Electric Boat

Stakeholder Outreach Efforts	
November 2018	
29 Nov 18	Met with Town of East Greenwich
31 Nov 18	Letter mailed to project abutters to attend Open House
December 2018	
4-10 Dec 18	Ads promoting Public Open House placed in three newspapers
11 Dec 18	Public Open House at New England Institute of Technology
February 2019	
13 Feb 19	EFSB Hearing, New England Institute of Technology
25 Feb 19	EFSB Hearing, West Warwick High School
March 2019	
11 Mar 19	East Greenwich Town Council

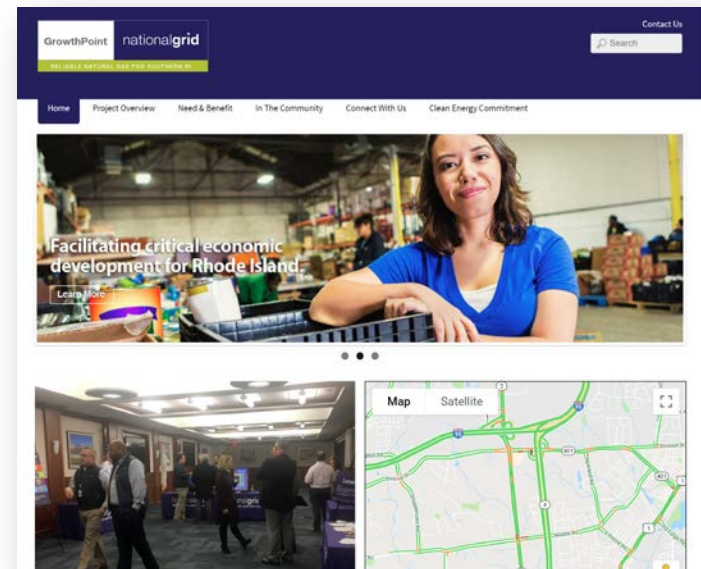
Committed to On-Going Communication

Multiple ways for stakeholders to communicate with the project team

Call our 24-hour hotline:
401-234-1138 or **877-423-1803**

Send us an Email:
info@growthpointri.com

Follow the project on Twitter:
(will launch when construction starts)
[@growthpointri](https://twitter.com/growthpointri)



Project website

<https://growthpointri.com/>

GrowthPoint

nationalgrid

RELIABLE NATURAL GAS FOR SOUTHERN RI